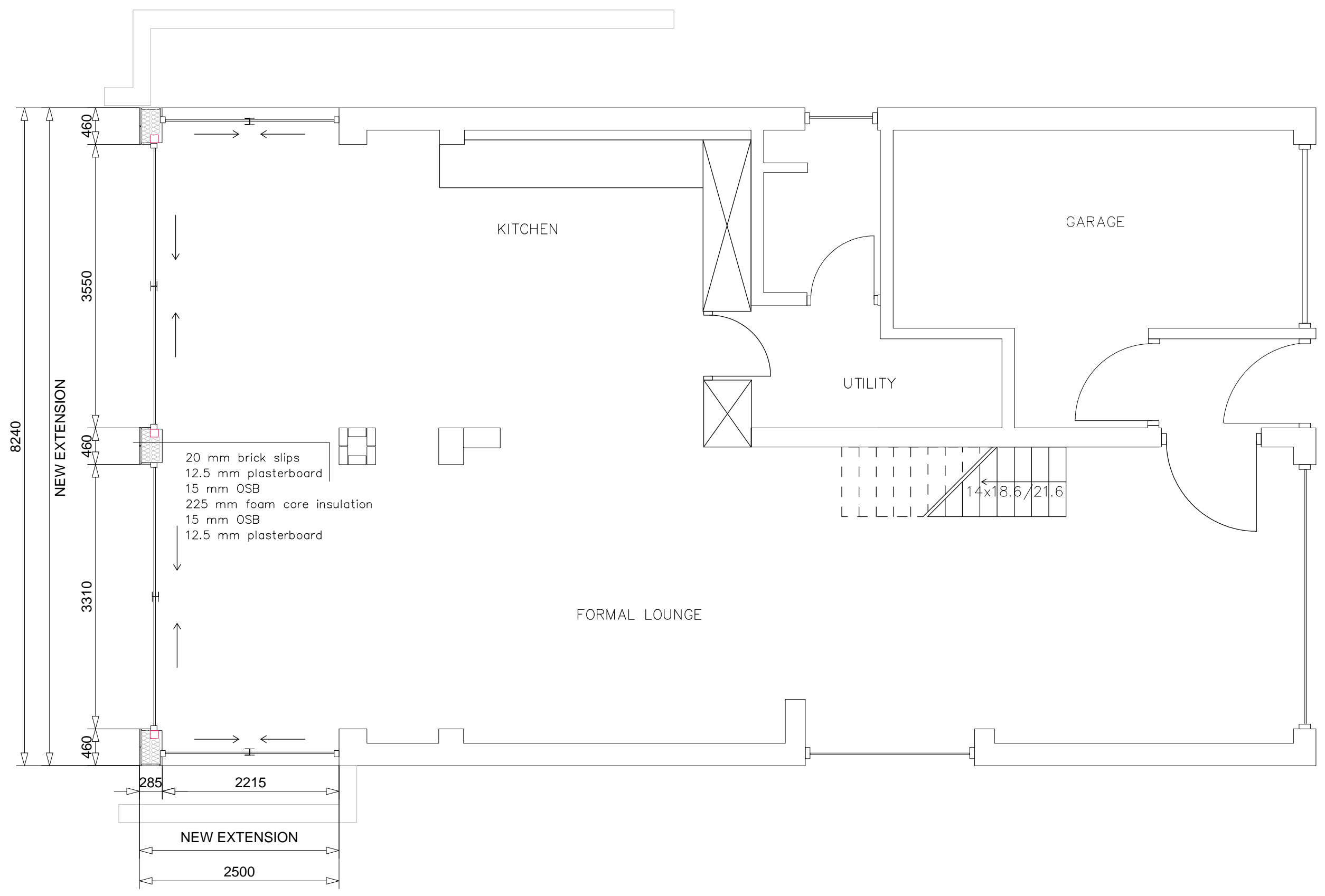


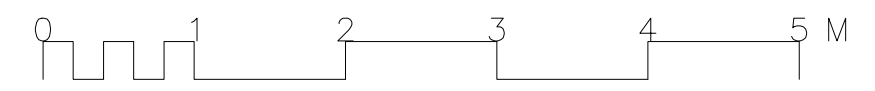


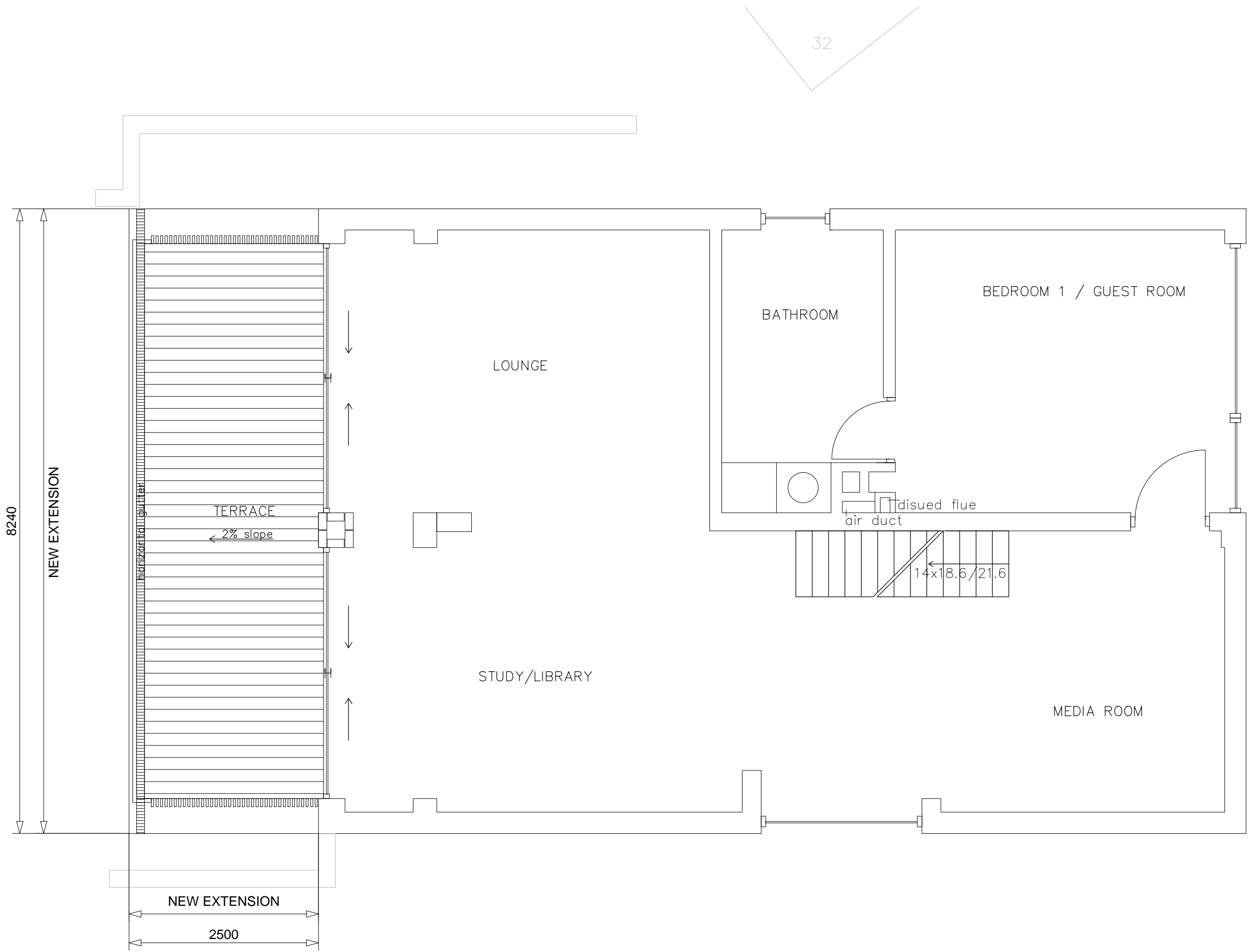
32

GARDEN



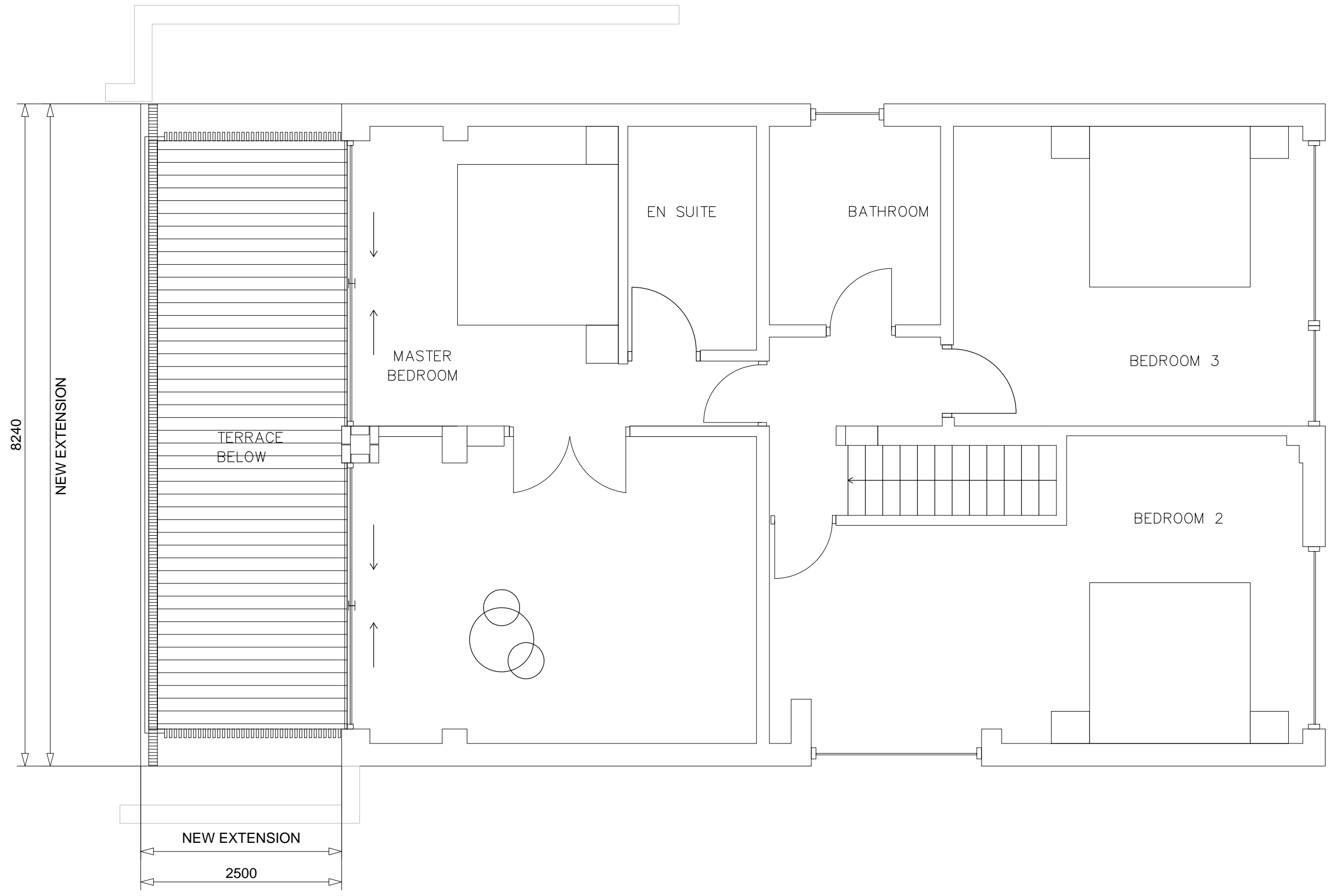
1 Proposed Ground Floor Plan  
1:50

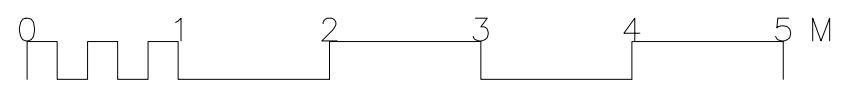
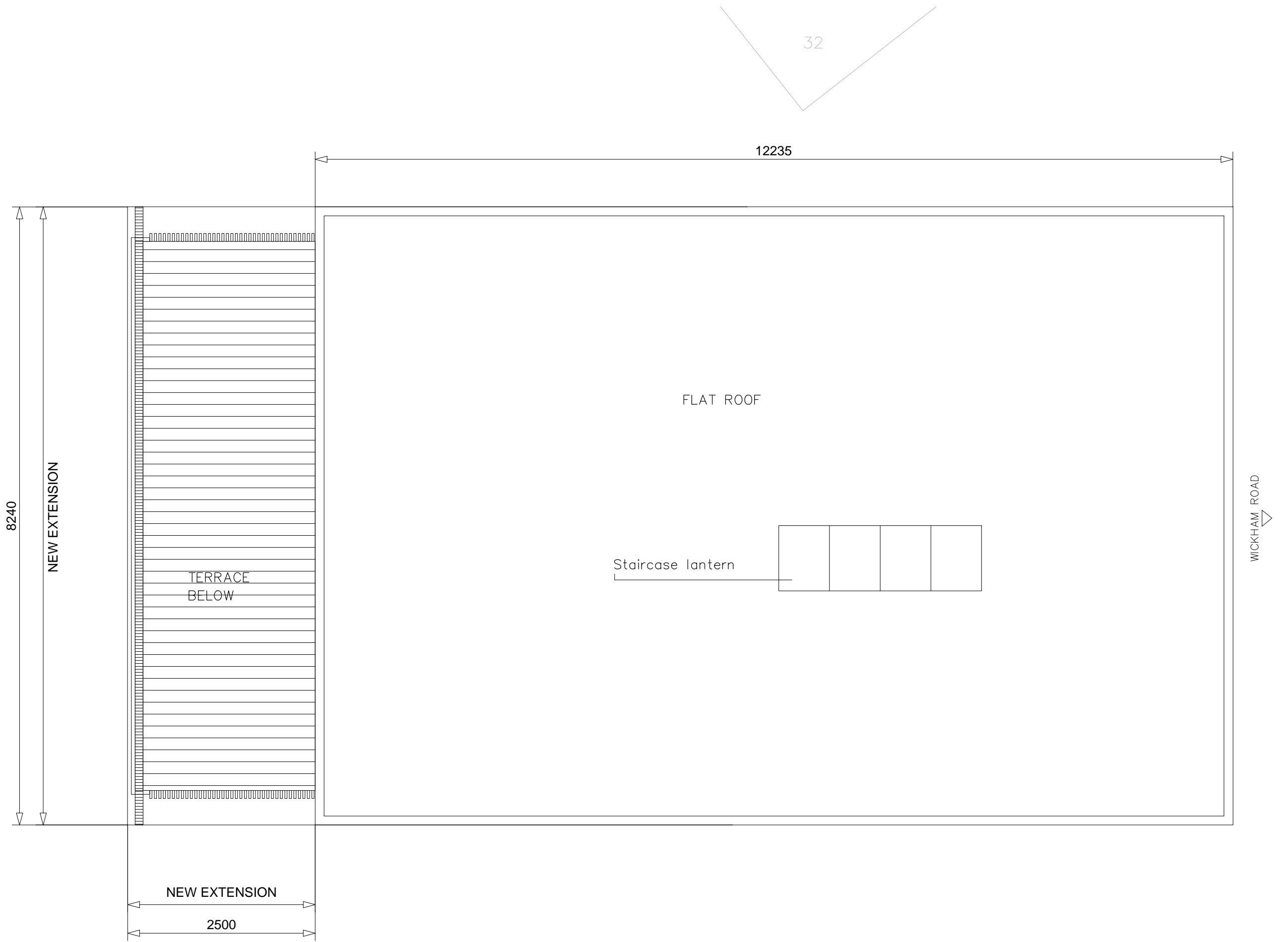




1 Proposed First Floor Plan  
1:50

32

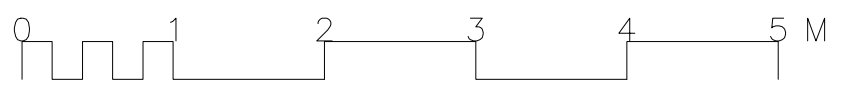


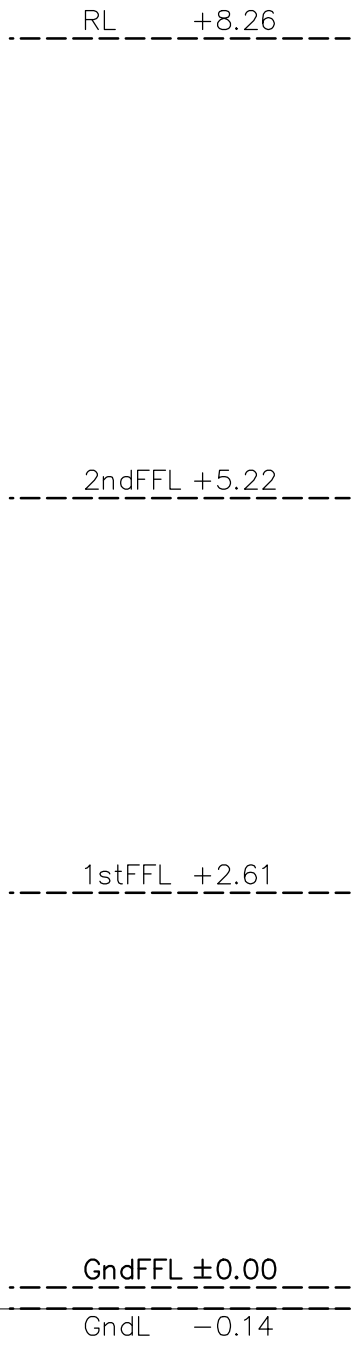
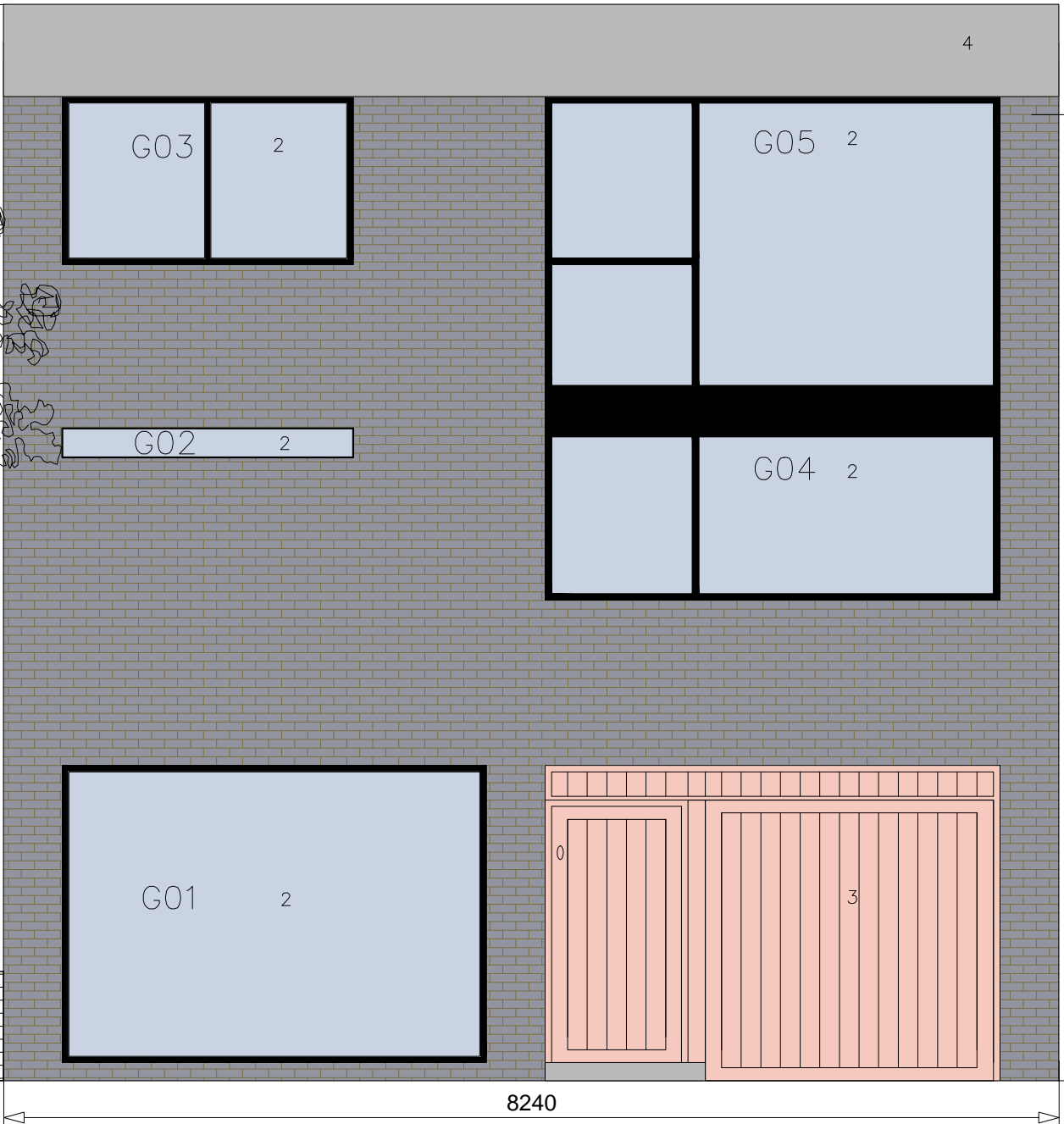




- KEY
- 1 Staffordshire Slate Blue Brick – to match existing
  - 2 Powder Coated Aluminium Framed Double Glazing – minimal joints
  - 3 Iron Balustrade
  - 4 Glass Balustrade
  - 5 Flat Roof
  - 6 Slatted Timber Screen

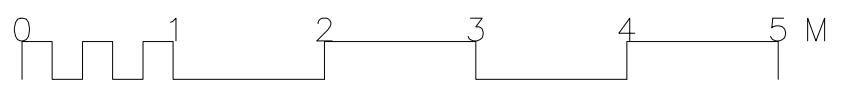
1 Proposed Rear Elevation  
1:50





- KEY
- 1 Staffordshire Slate Blue Brick – to match existing
  - 2 Powder Coated Aluminium Framed Double Glazing
  - 3 Timber
  - 4 Flat Roof

1 Proposed Front Elevation  
1:50





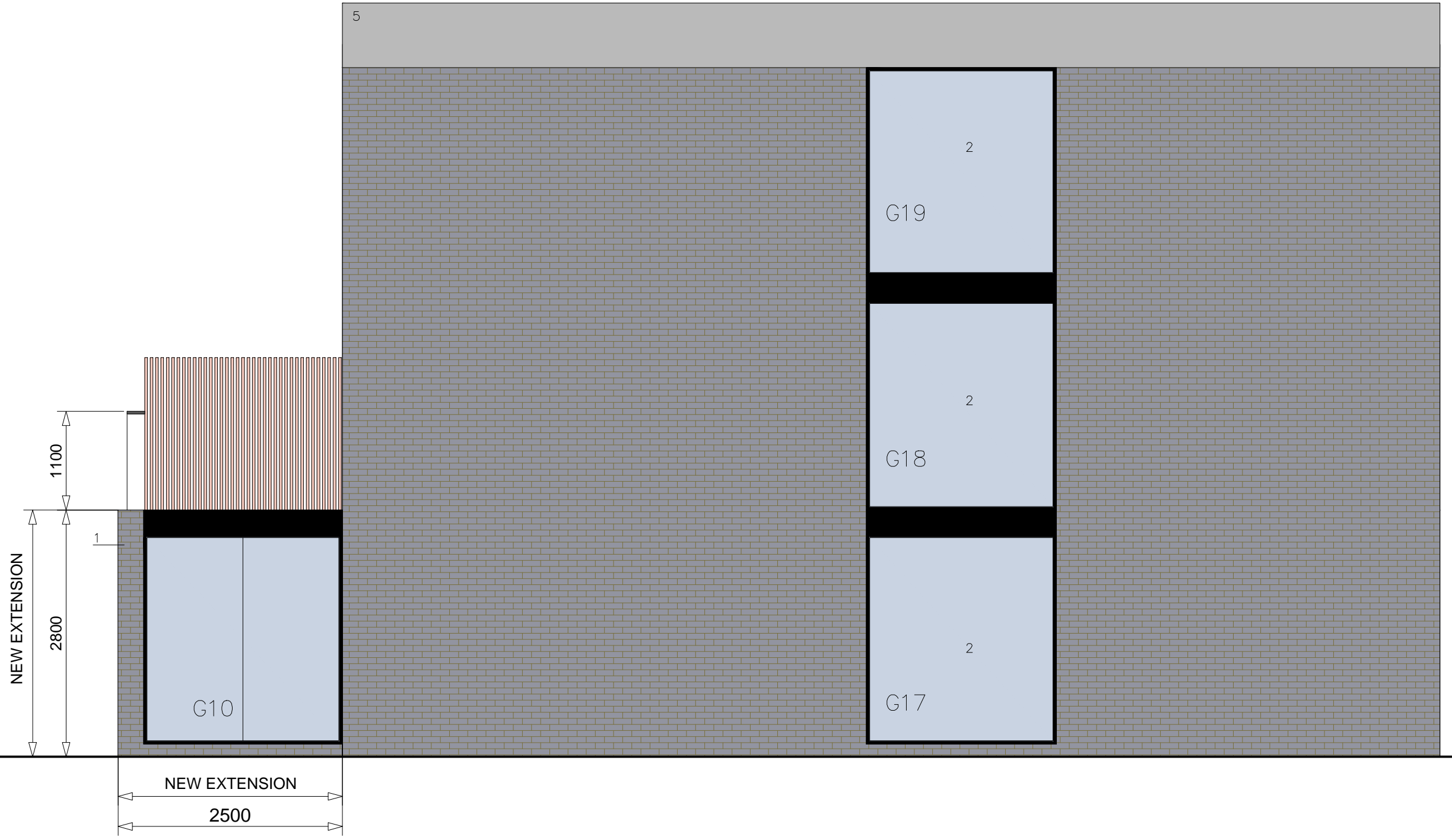
RL +8.26

2ndFFL +5.22

1stFFL +2.61

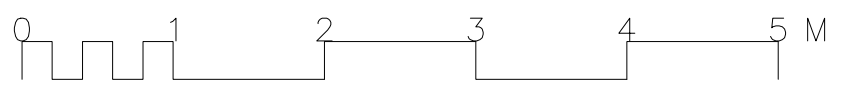
GndFFL ±0.00

GndL -0.14

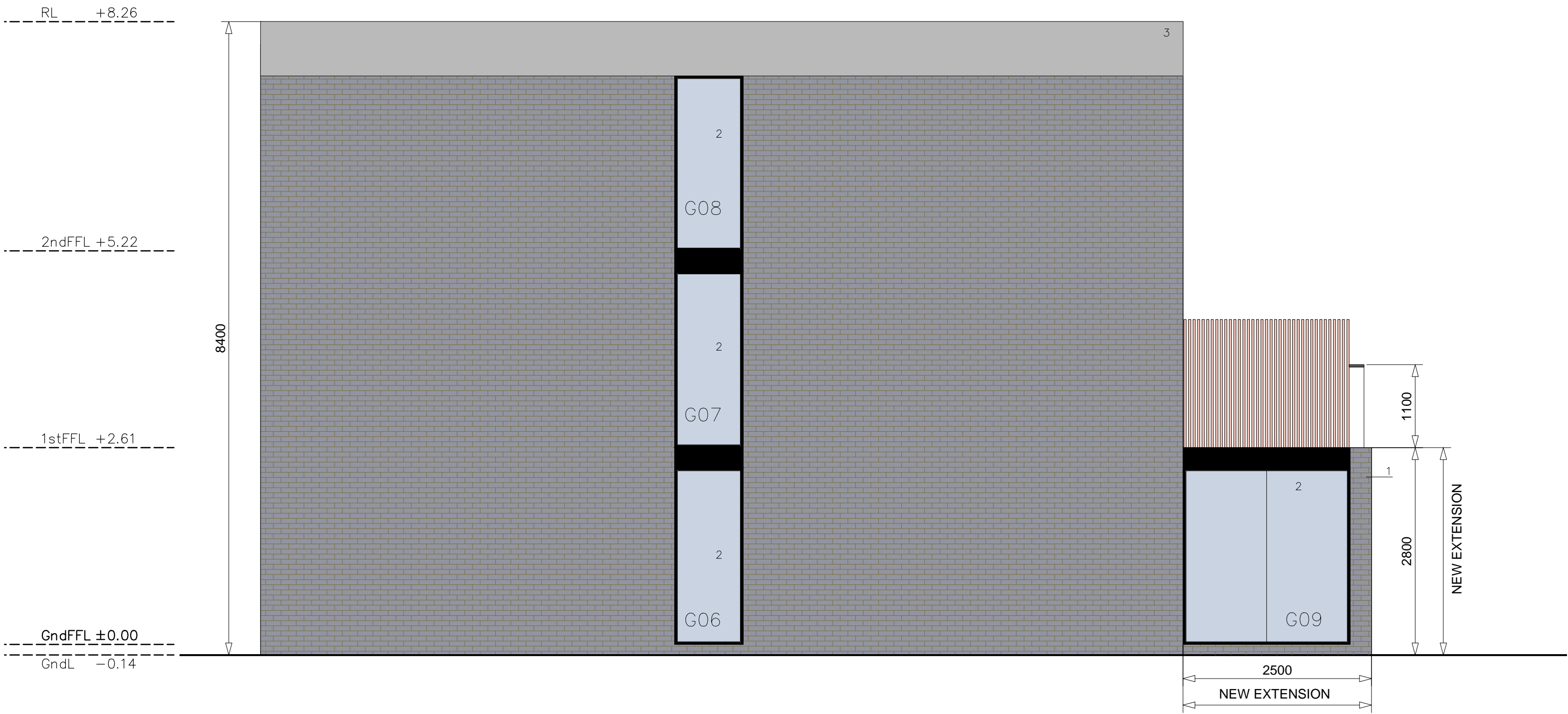


- KEY
- 1 Staffordshire Slate Blue Brick – to match existing
  - 2 Powder Coated Aluminium Framed Double Glazing
  - 3 Glass Balustrade
  - 4 Powder Coated Aluminium Panels
  - 5 Flat Roof
  - 6 Slatted Timber Screen

1 Proposed South Elevation  
1:50

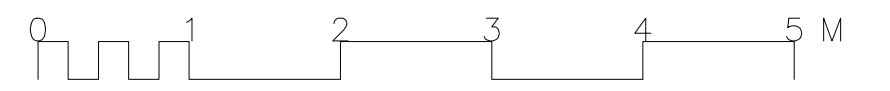


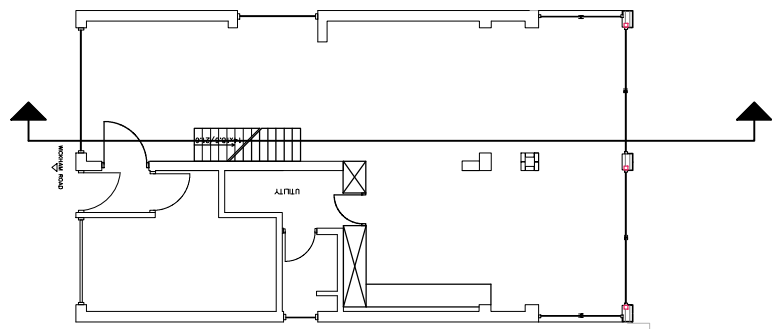
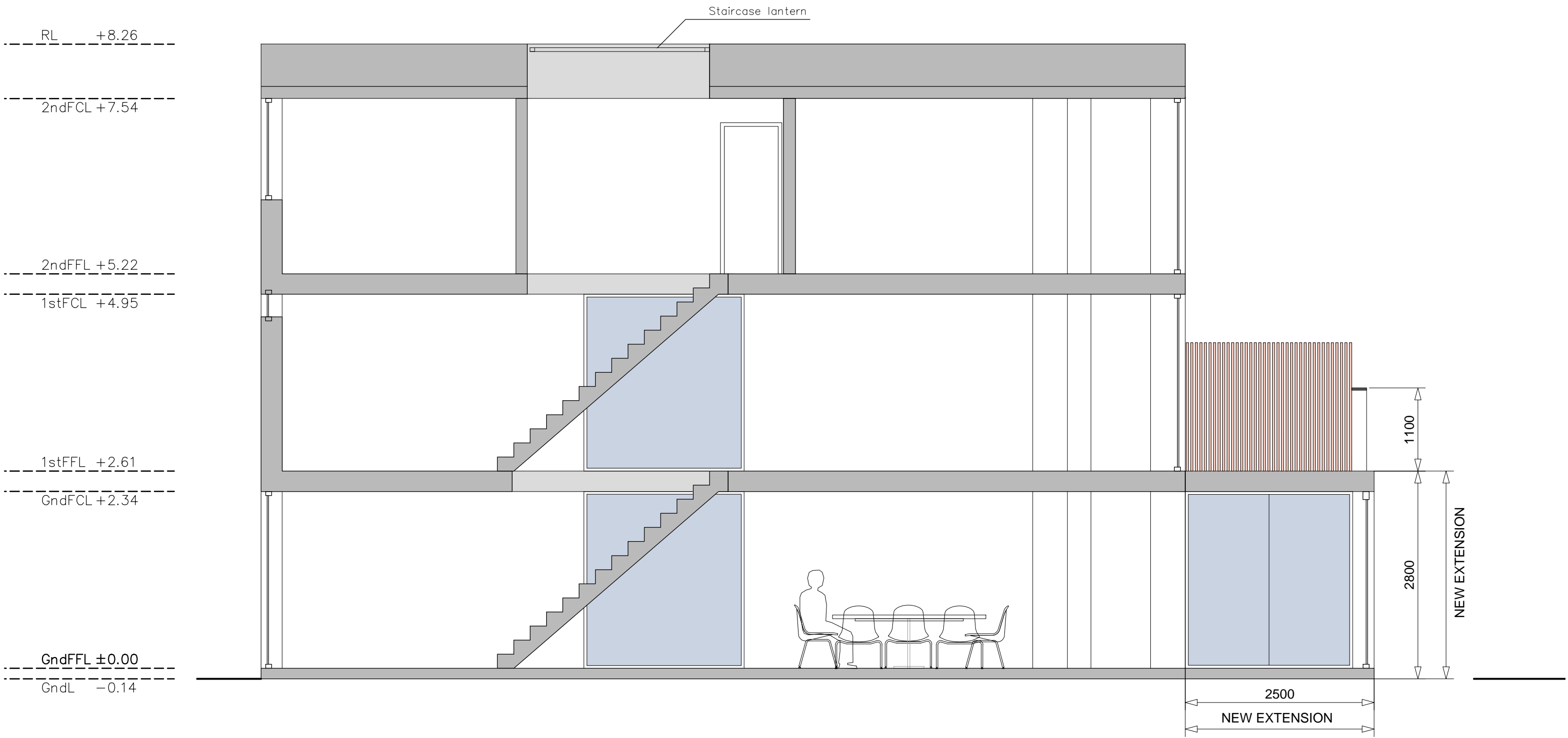




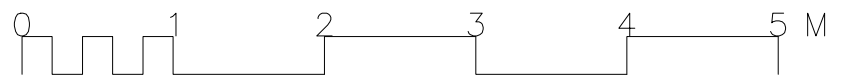
- KEY
- 1 Staffordshire Slate Blue Brick – to match existing
  - 2 Powder Coated Aluminium Framed Double Glazing
  - 3 Flat Roof
  - 4 Slatted Timber Screen

1 Proposed North Elevation  
1:50





- KEY
- 1 Slatted Timber Screen



1 Proposed Section  
1:50

RL +8.26

2ndFCL +7.54

2ndFFL +5.22

1stFCL +4.95

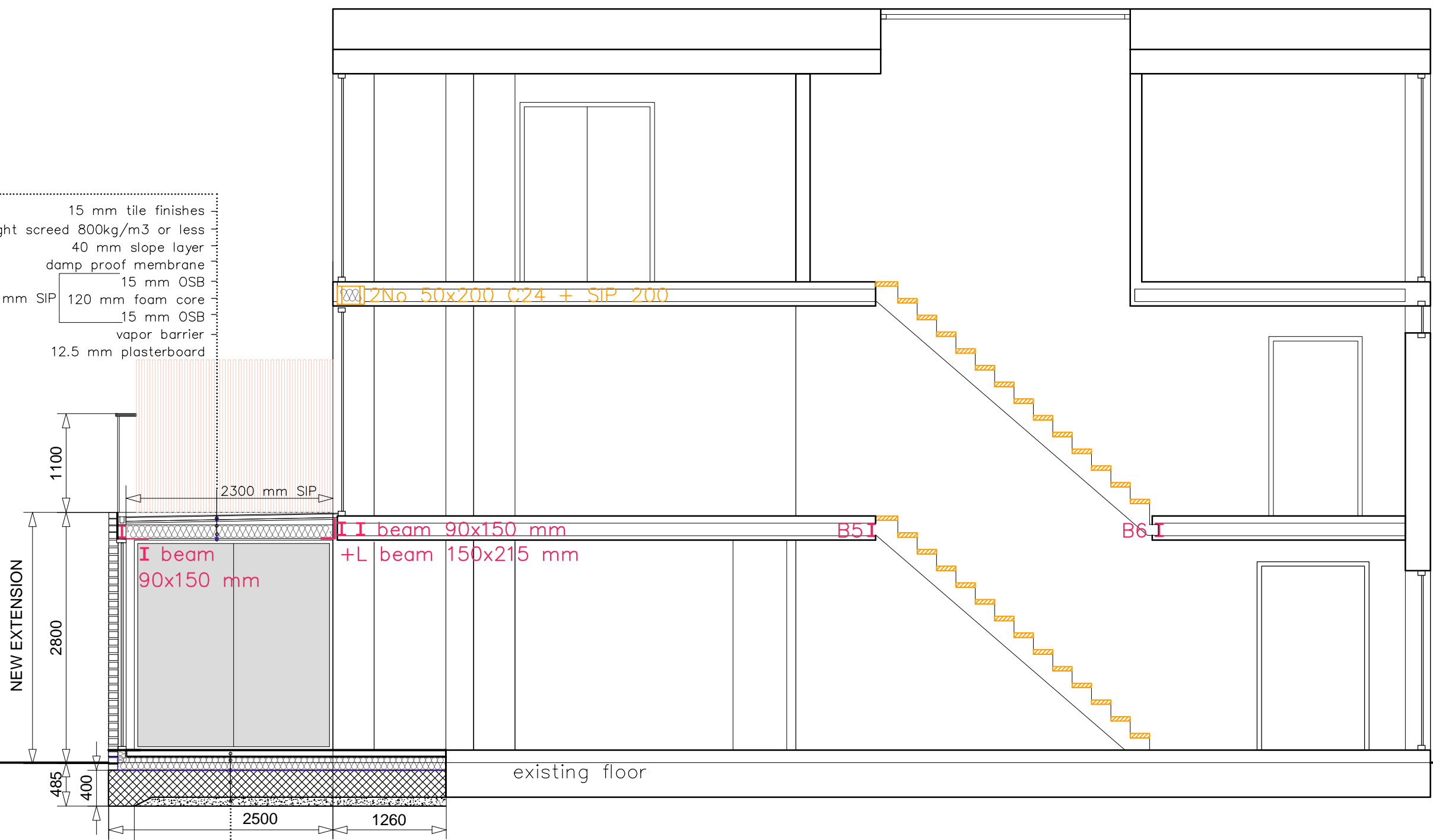
1stFFL +2.61

GndFCL +2.34

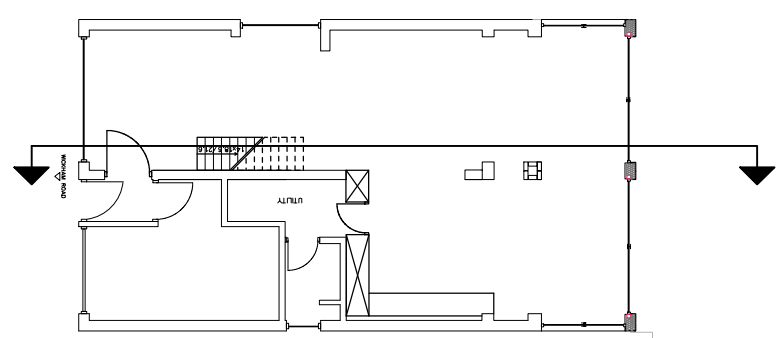
GndFFL ±0.00

GndL -0.14

15 mm tile finishes  
 45 mm lightweight screed 800kg/m<sup>3</sup> or less  
 40 mm slope layer  
 damp proof membrane  
 15 mm OSB  
 150 mm SIP  
 120 mm foam core  
 15 mm OSB  
 vapor barrier  
 12.5 mm plasterboard

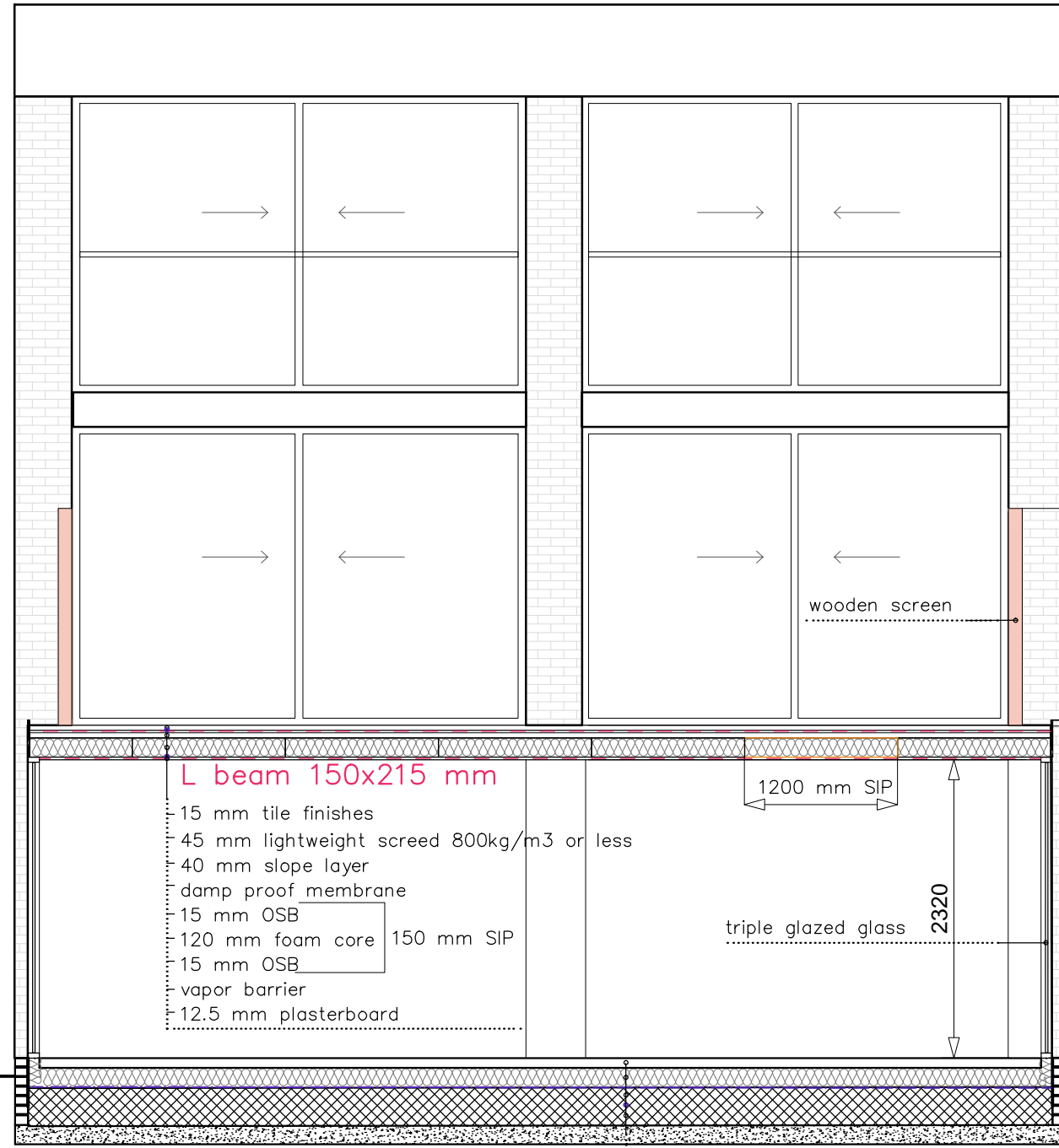


75 mm screed finishes  
 150 mm insulation on  
 500 G visqueen  
 damp proof membrane  
 300 mm concrete raft  
 min. 100 mm sand blinding  
 compacted hardcore



0 1 2 3 4 5 M

1 Proposed Section 2  
 1:50



RL +8.26

2ndFCL +7.54

2ndFFL +5.22

1stFCL +4.95

1stFFL +2.61

GndFCL +2.34

GndFFL ±0.00

GndL -0.14

1700

2800  
NEW EXTENSION

wooden screen

L beam 150x215 mm

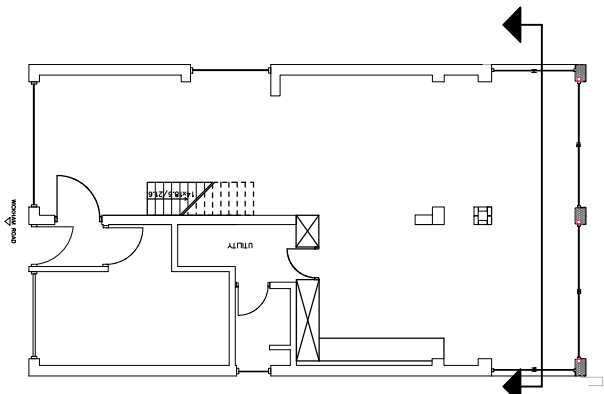
- 15 mm tile finishes
- 45 mm lightweight screed 800kg/m<sup>3</sup> or less
- 40 mm slope layer
- damp proof membrane
- 15 mm OSB
- 120 mm foam core 150 mm SIP
- 15 mm OSB
- vapor barrier
- 12.5 mm plasterboard

1200 mm SIP

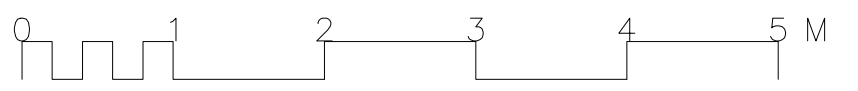
triple glazed glass

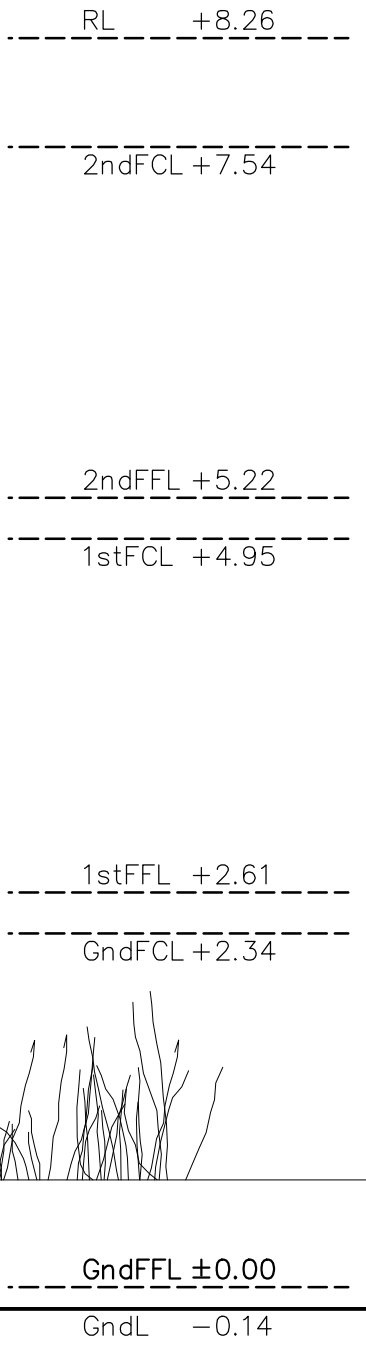
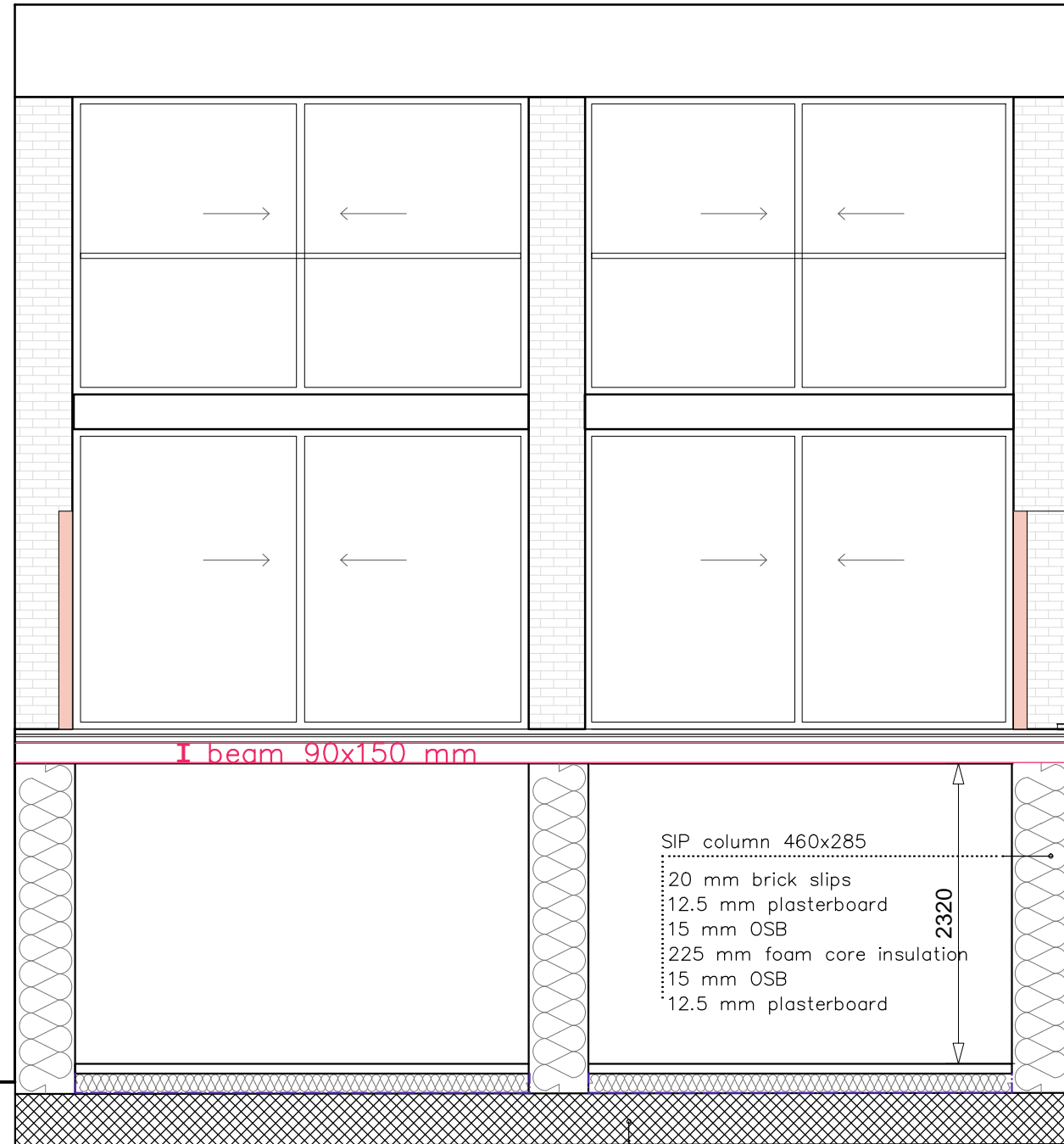
2320

- 75 mm screed finishes
- 150 mm insulation on
- 500 G visqueen
- damp proof membrane
- 300 mm concrete raft
- min. 100 mm sand blinding
- compacted hardcore



1 Proposed Section 3  
1:50





1700

2800  
NEW EXTENSION

2320

1 Proposed Section 4  
1:50

